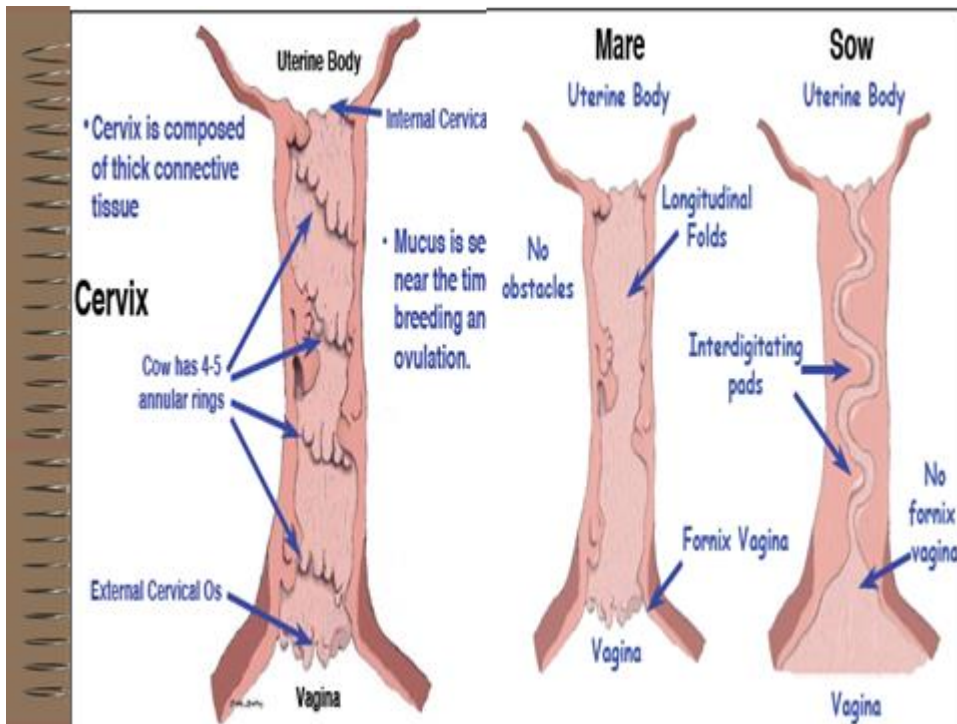
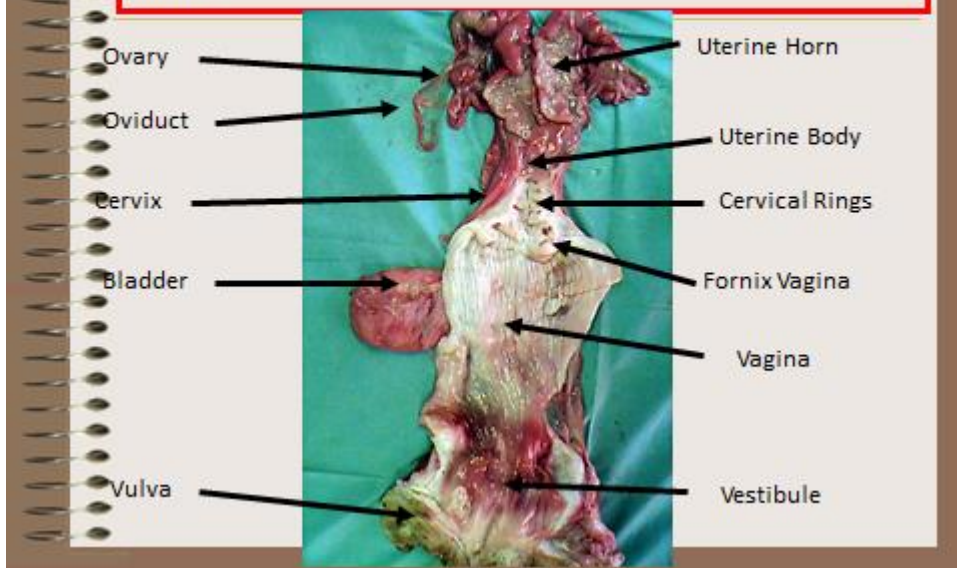


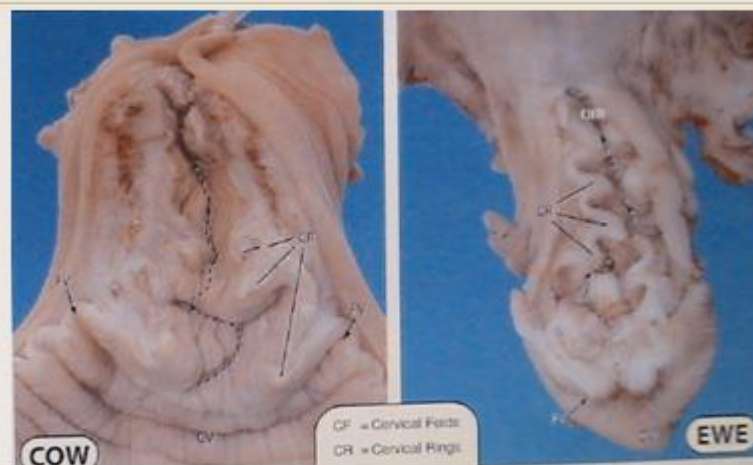
Cervix : it is thick-walled and inelastic , the interior end being continuous with the body of uterus while the posterior end protrude into the vagina . It contains a canal which is the opening into the uterus .

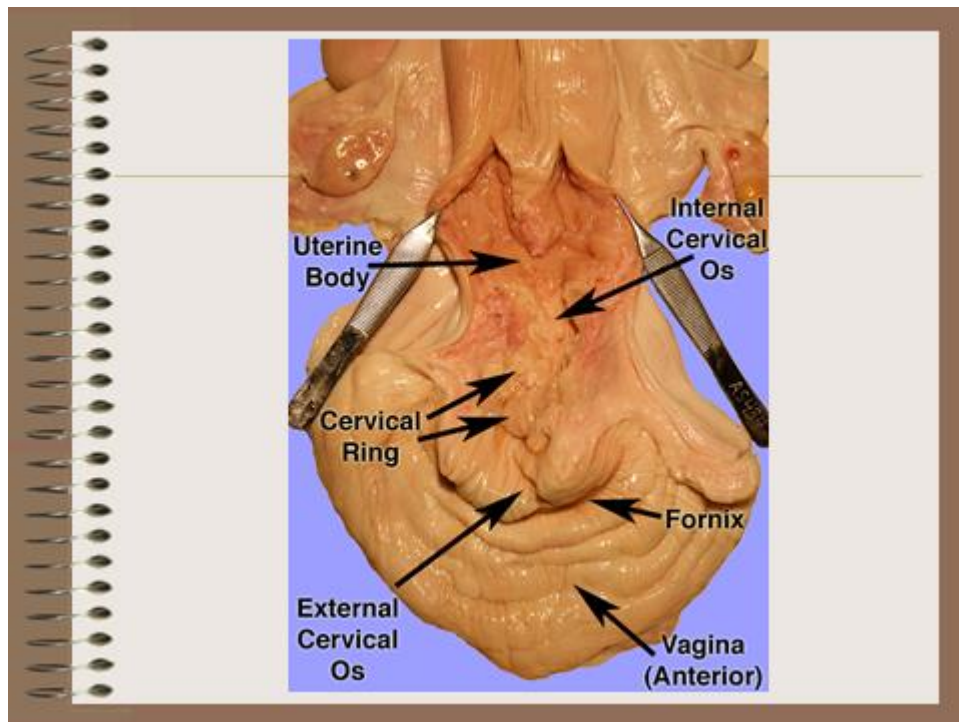


Shape cervix in different species animals



Shape cervix in different species animals





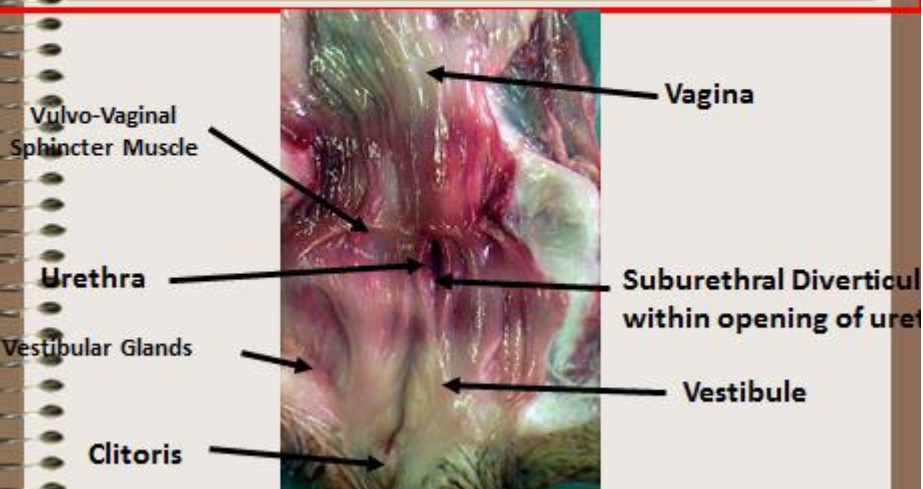
Functions of the Cervix

- Transport of sperm
- Barrier to sperm (species dependent)
- Reservoir for sperm
- Blocking bacterial invasion during pregnancy
- Birth canal

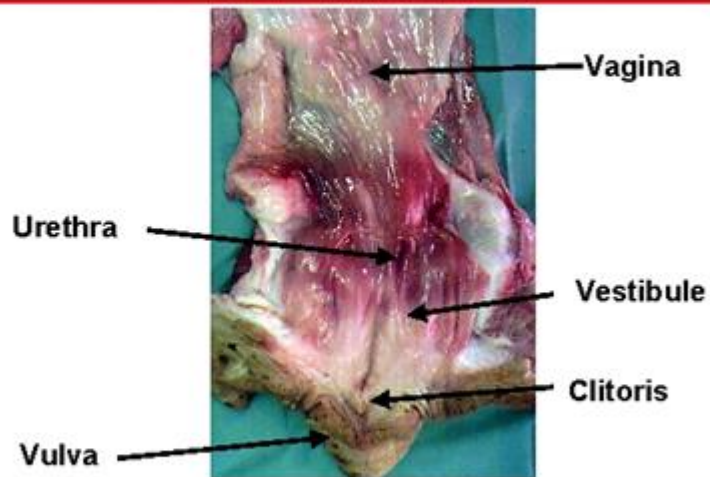
Vagina

- Its tubular parts in shape , thin-walled and quite elastic connect between cervix and vestibule
- Function :
 - 1-semen is deposited in to anterior end near the cervix in cow , ewe , doe
 - 2- female organ copulation
 - 3-Site for expulsion of urine
 - 4-passive birth canal during parturition

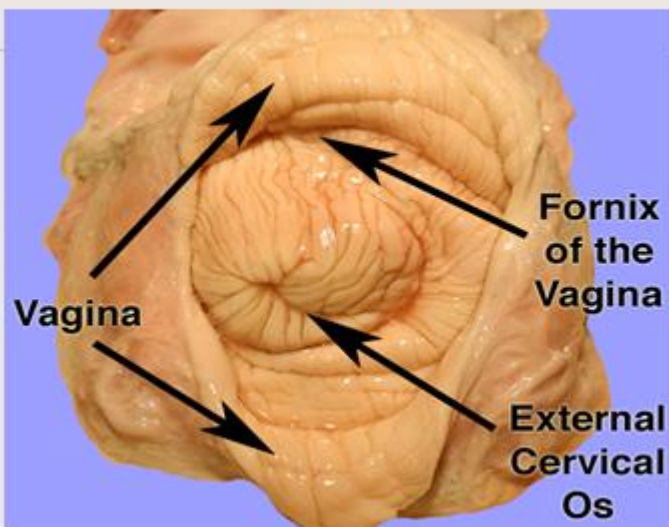
Vagina-Urethra-Vestibule

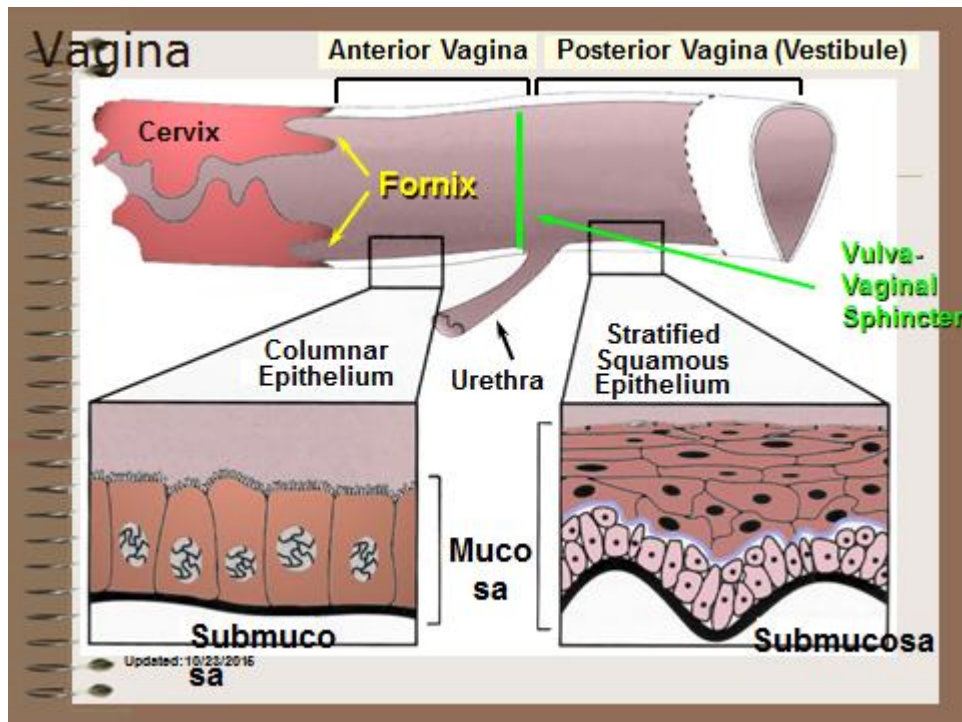


Vulva-Vestibule-Vagina



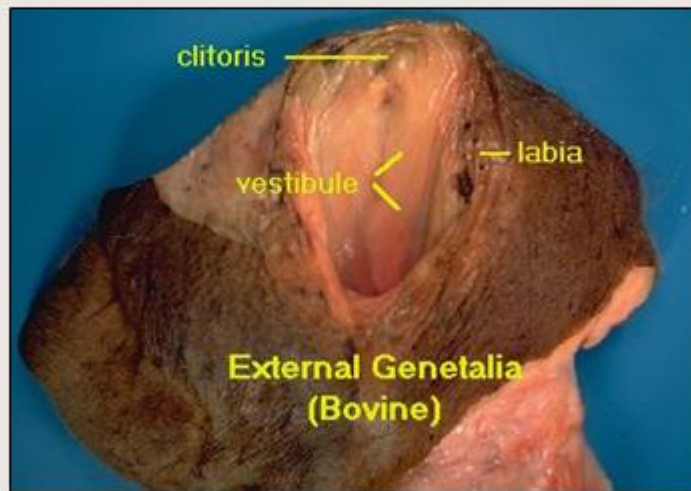
Vagina





- **Vulva**: external part of female reproductive tract . Consist two labia (major and minor) that meet in the medial of tract to form two commissure, its consist mainly of adipose tissue embedded smooth muscle known constrictor vulva muscle
- **Clitoris** : homologous to the glans penis in the male . Is located ventrally inside labia . It consist erectile tissue and well supplied with sensory nerves .

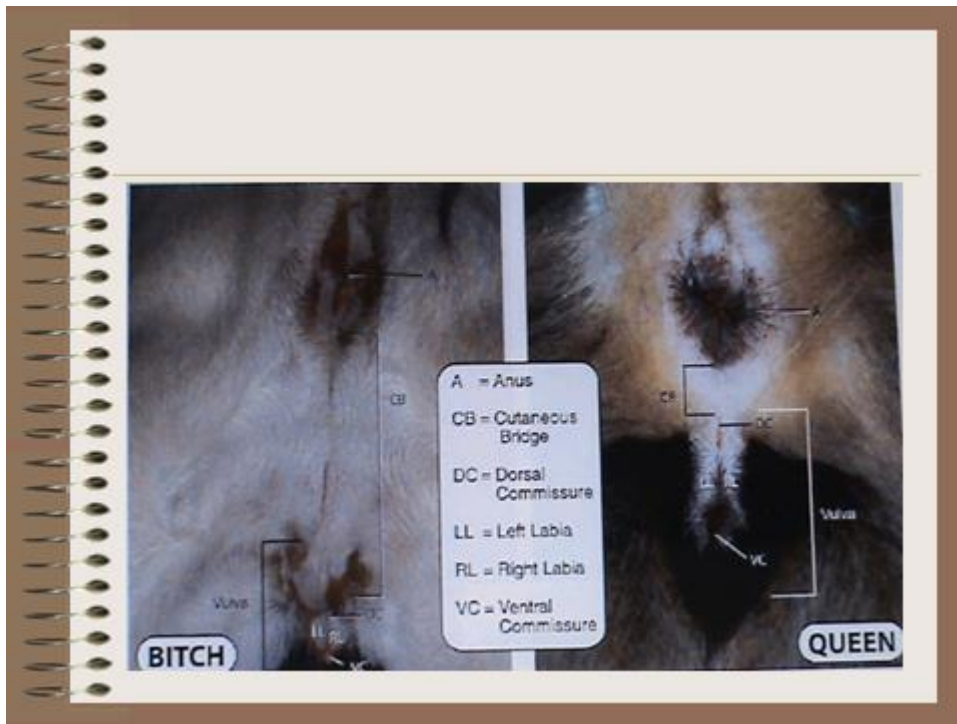
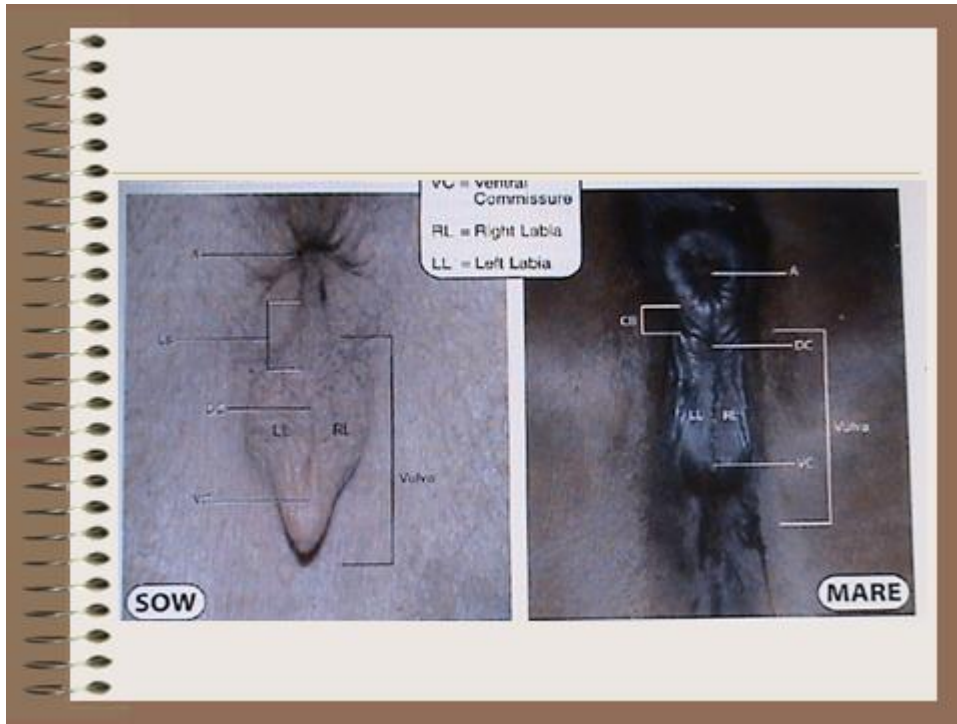
Female Reproductive System

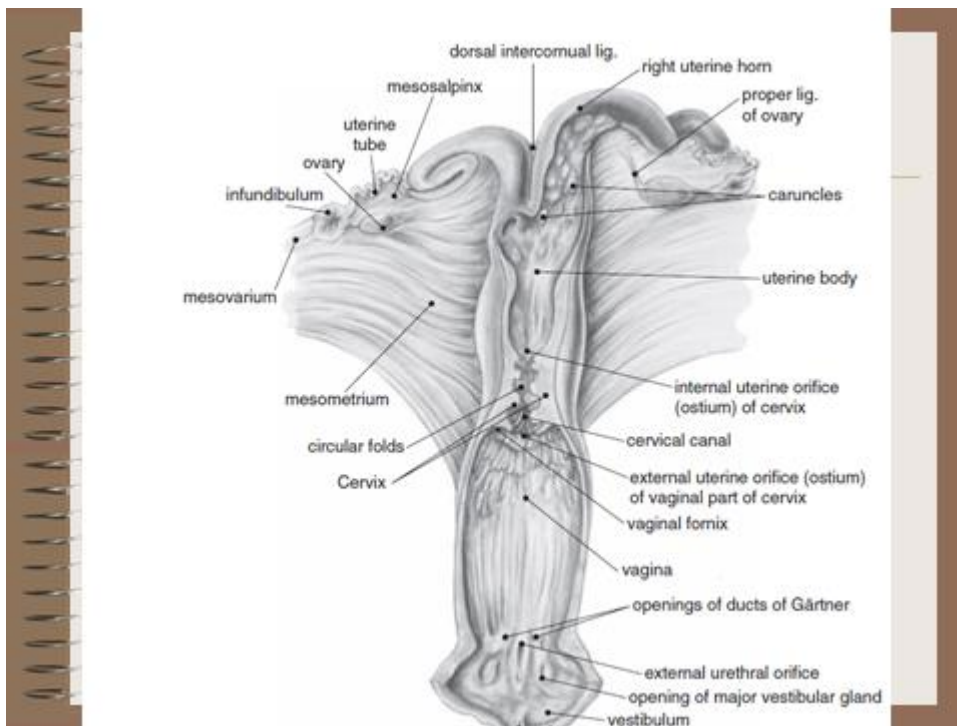
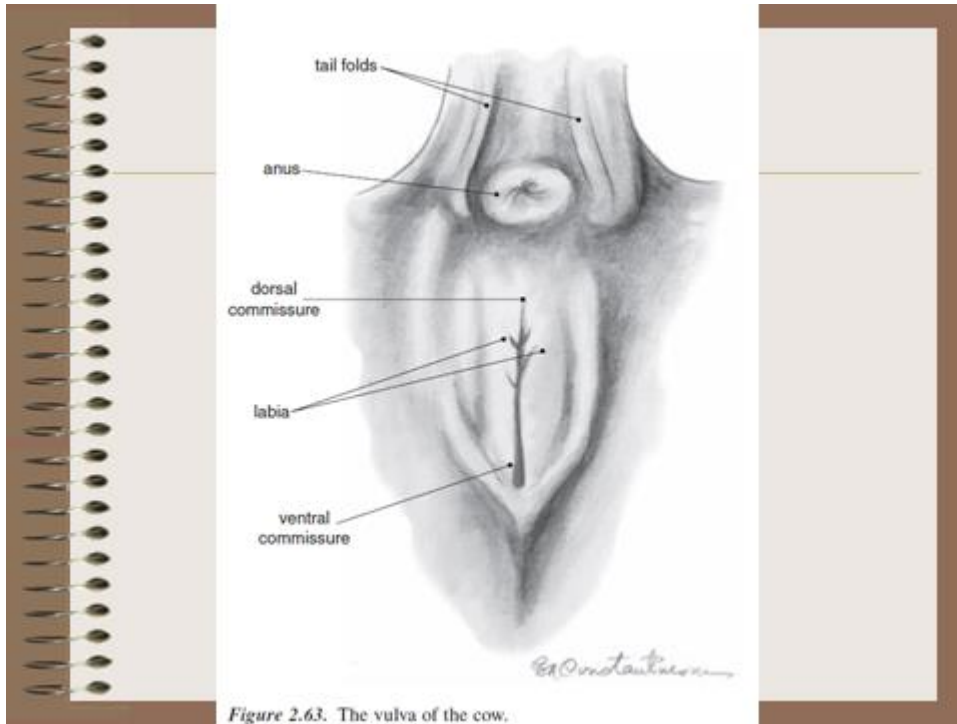


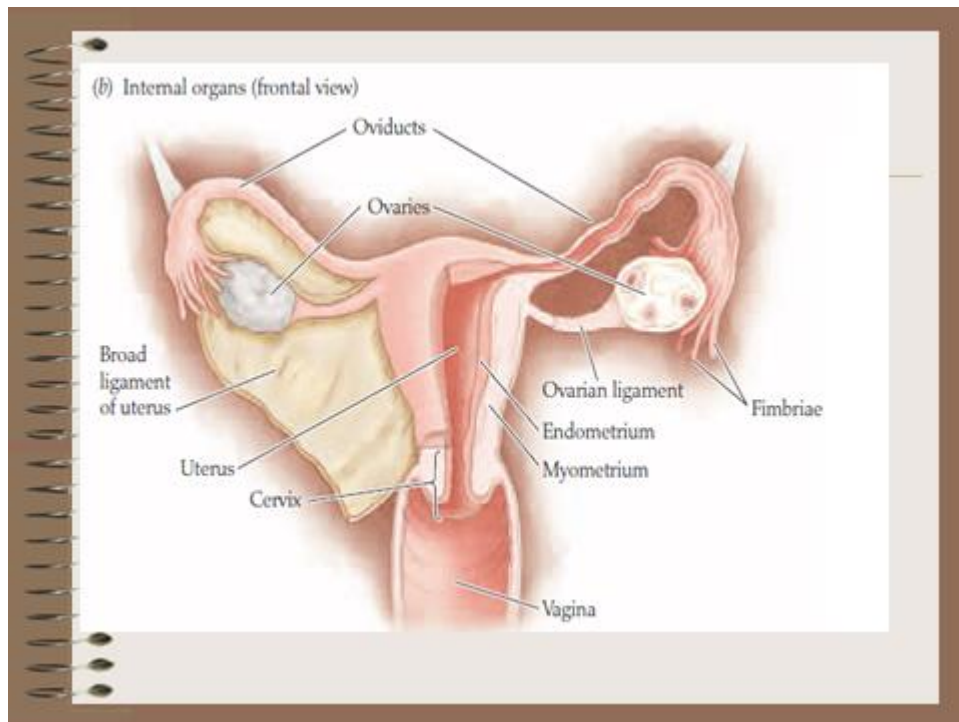
Vulva shape in different species animals



Updated: 10/23/20
15







Ovulation Rates

Ovulation Rates by Species

Cow-	1 egg per estrus
Ewe-	1 to 3 eggs per estrus
Sow-	10 to 20 eggs per estrus
Mare-	1 egg per estrus
Hen-	Approx. 28 eggs per month